

UMR CNRS 6538 Géosciences Océan - UBS - Vannes - 2018 – 2021

Title

Coastal geomorphology, source to sink stratigraphic architecture and Quaternary sea-level fluctuation: Bay of St Brieuc

Project summary (200 words maximum)

The project aims to understand

- (1) The coastal dynamics of the Bay of St Brieuc through the analysis of remotely sensed data and evidences gathered from field campaigns to study cliff retreat and estimation of coastal erosion/accretion;
- (2) The architectural framework of the near-shore and offshore zone utilizing geophysical data in order to investigate the relationship between onshore sediment transport and marine deposition.
- (3) Quaternary sea-level fluctuations and paleo-climate reconstruction from marine terraces utilizing Cosmogenic nuclides and OSL dating.

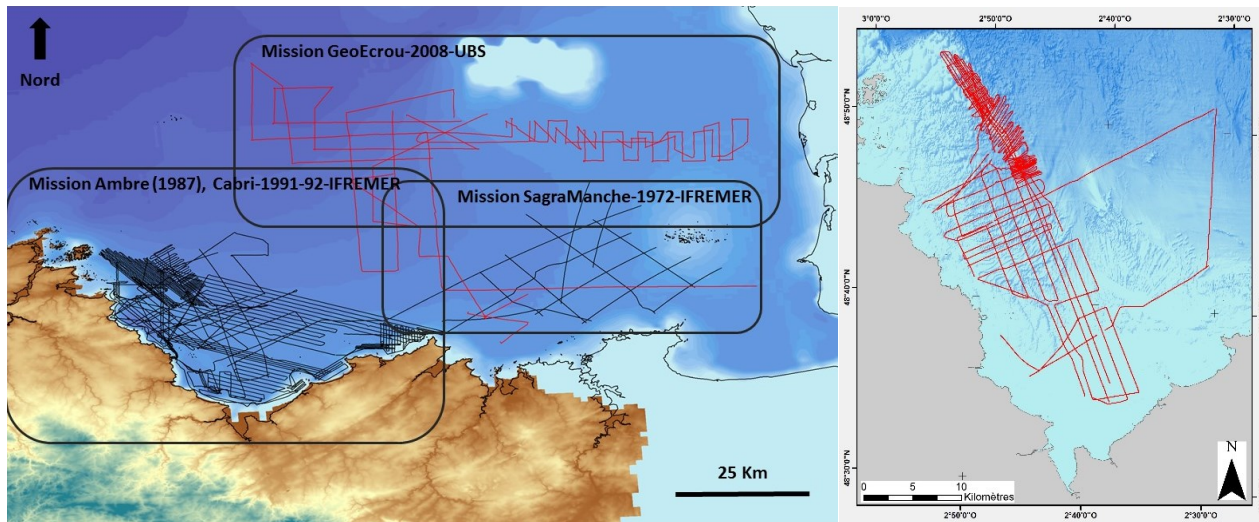


Figure 1 : Location of Seismic profiles SAGRAMANCHE (1972), AMBRE (1987), CABRI (1991-1992), GeoECROU (2008) et GEOSTBRIEUC (2018).

Partners

IFREMER ; BRGM ; SHOM